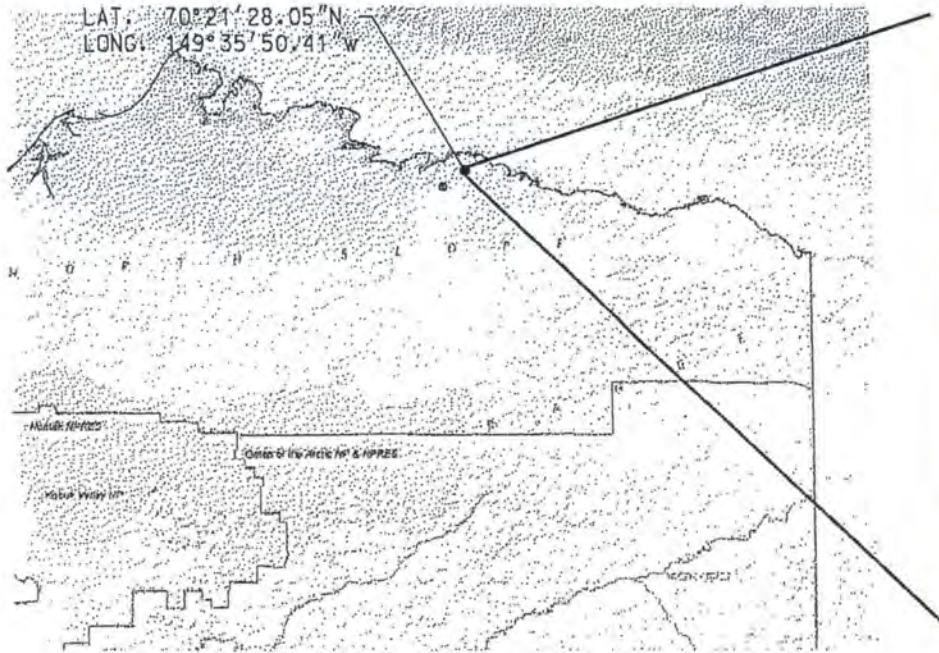
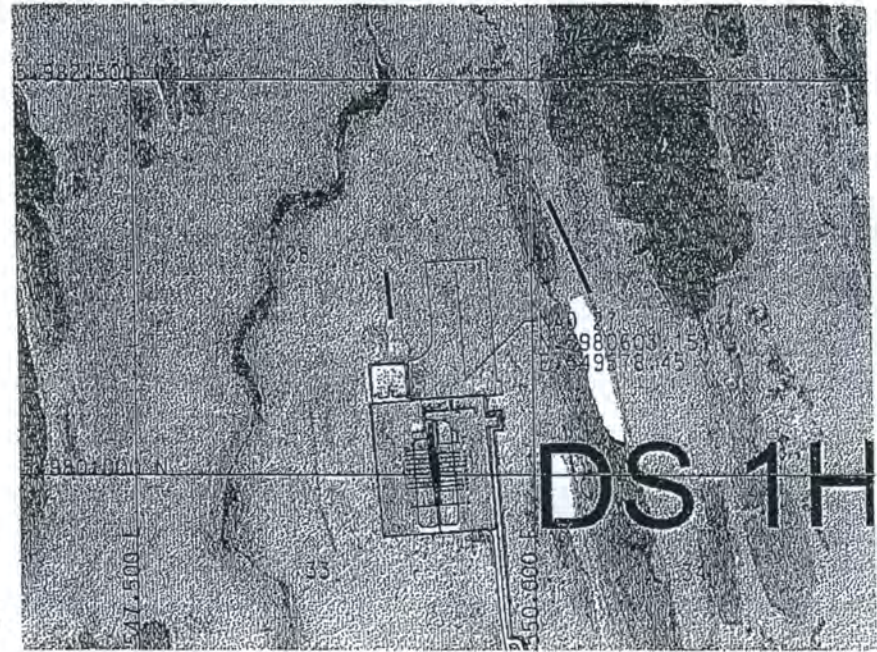


1H NEWS DEVELOPMENT PROJECT



LOCATION - NORTH SLOPE ALASKA



SITE DS-1H

NOTE:

THESE MAPS ARE BASED ON ESRI IMAGERY

PROJECT LOCATION:

WELL NO. 101

DATUM
ALASKA STATE PLANE NAD 27
ZONE 4
FIPS 5004

COORDINATE
LAT. 70° 21' 28.05" N
LONG. 149° 35' 50.41" W
N. 5,980,603.15
E. 549,578.45

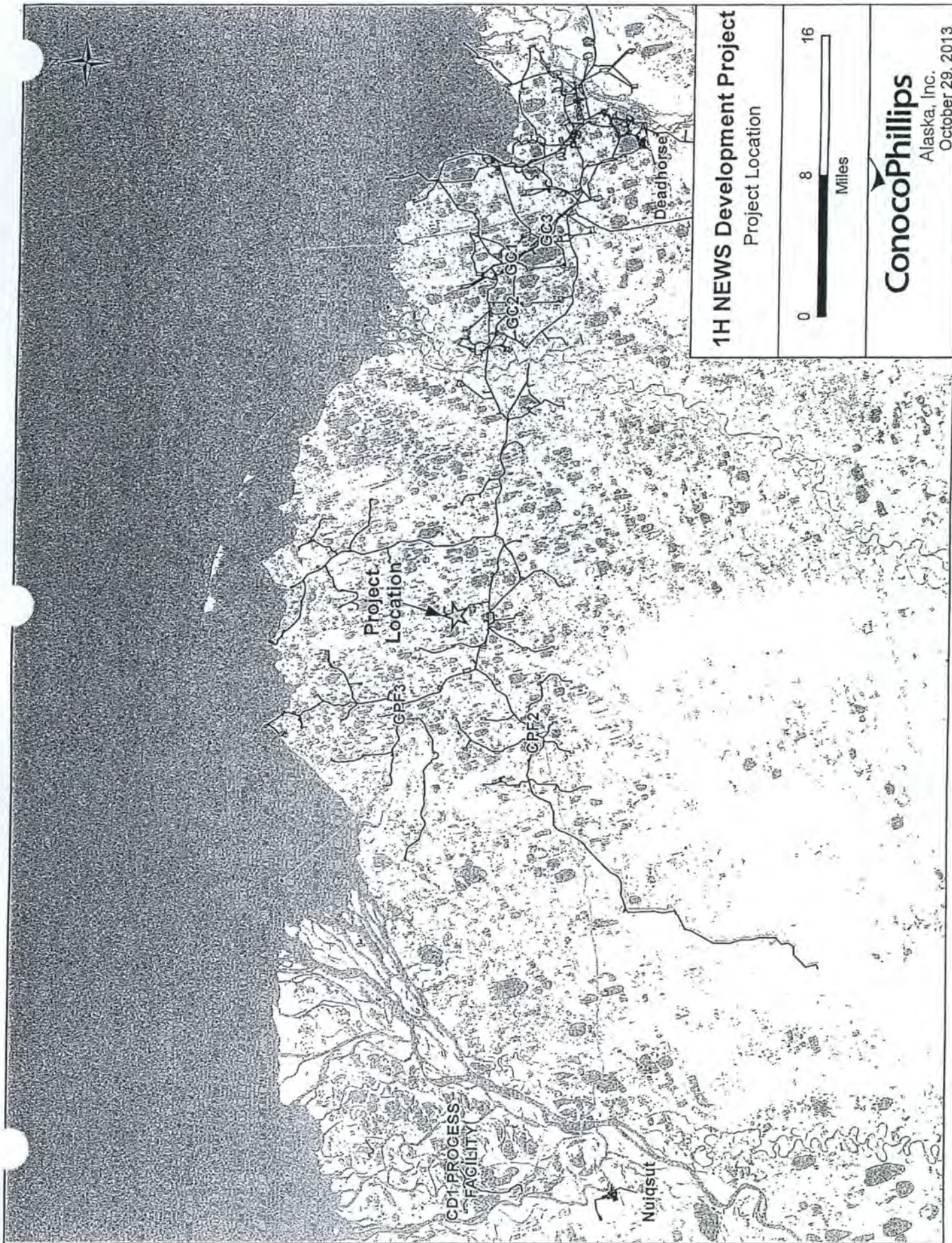
URS

7800 E UNION AVE, STE 100
DENVER, CO 80237
303-843-2000

ENERGY & CONSTRUCTION, Inc.

1H NEWS DEVELOPMENT PROJECT
CIVIL PACKAGE COVER SHEET
PERMITTING ONLY

CED-DS1HX-2001

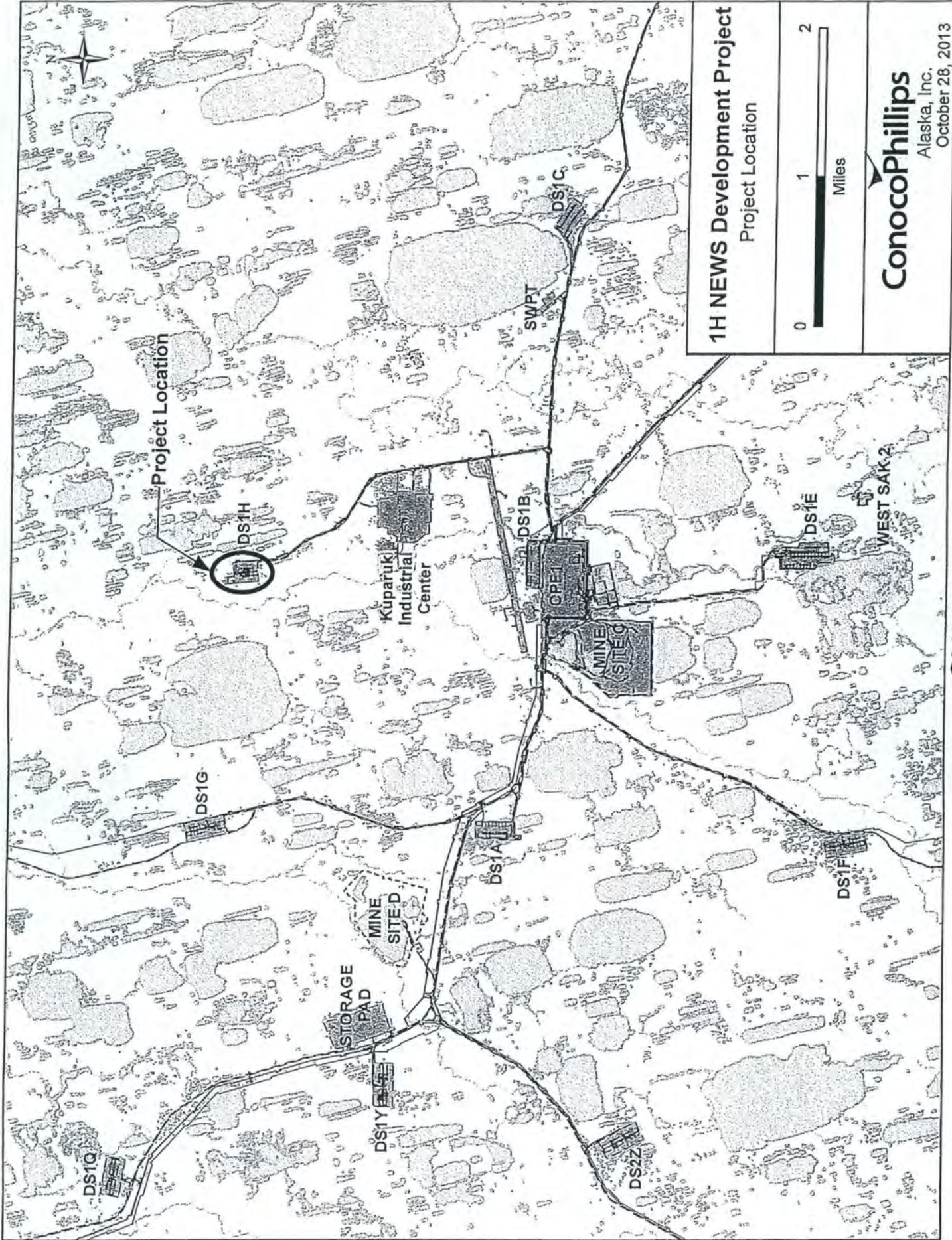


1H NEWS Development Project
Project Location



ConocoPhillips

Alaska, Inc.
October 29, 2013

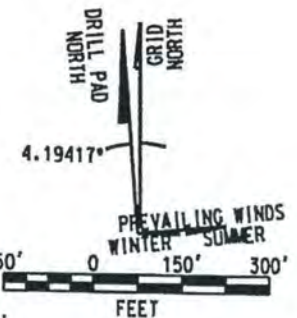
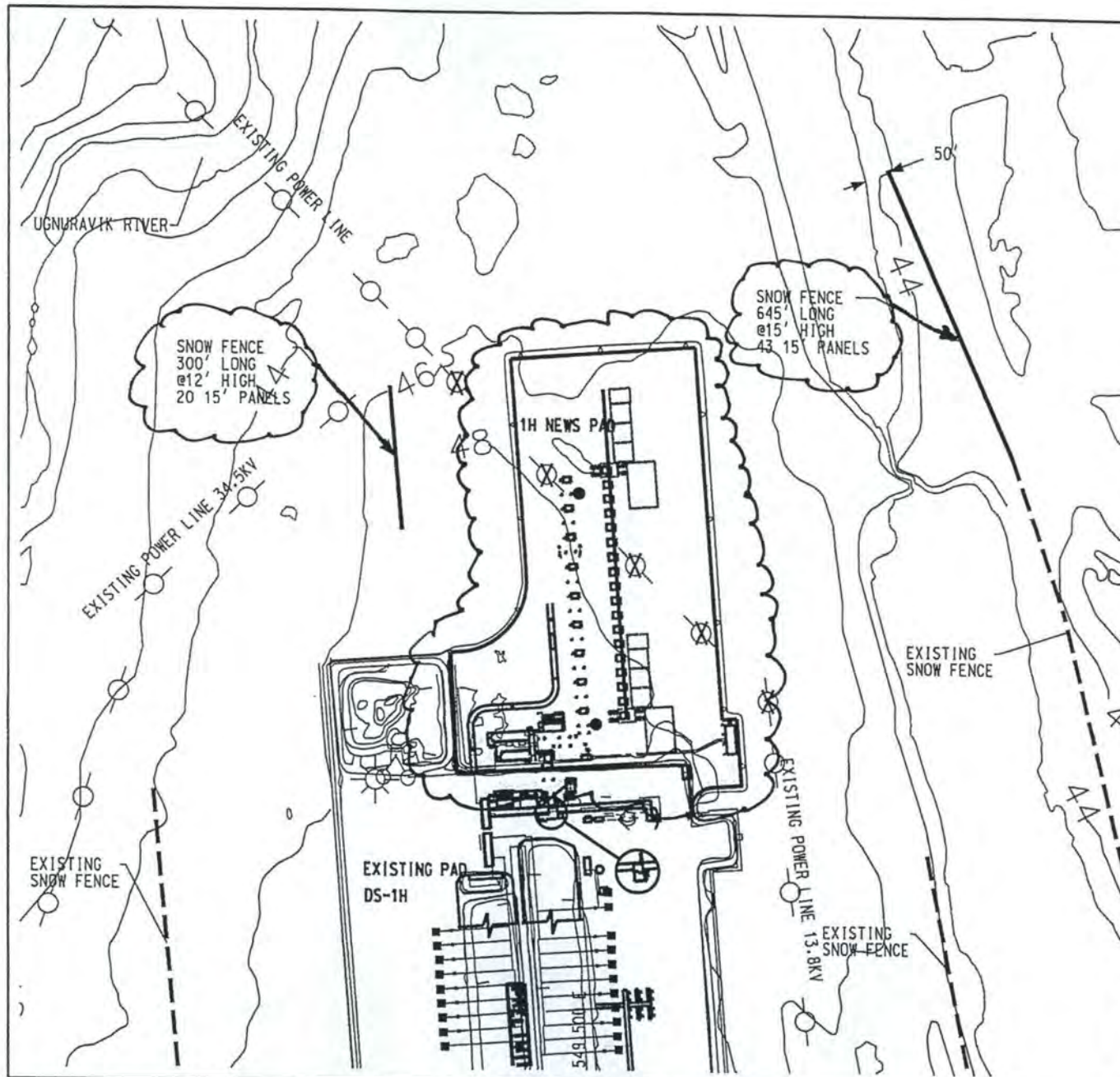


1H NEWS Development Project
Project Location



ConocoPhillips

Alaska, Inc.
October 28, 2013



NOTES:
 1 ALL COORDINATES ARE IN NAD 27 ALASKA-4, FIPS 5004, STATE PLANE COORDINATE SYSTEM, US FOOT.

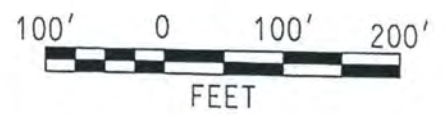
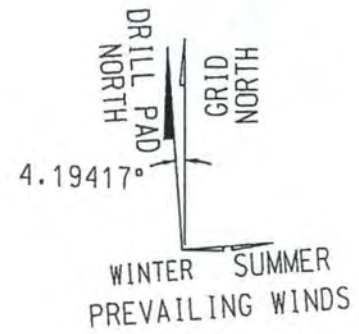
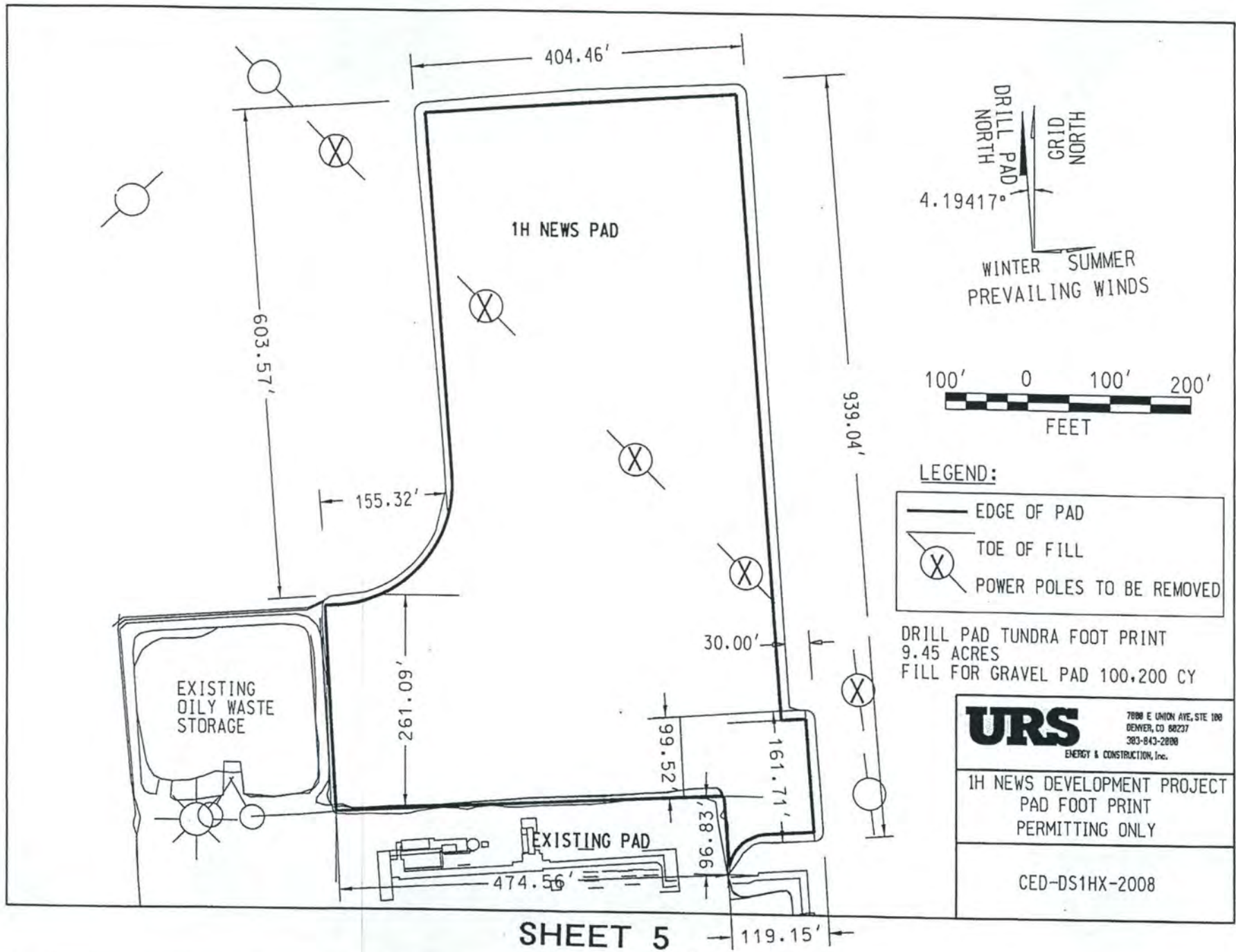
LEGEND:

	EDGE OF PAD
	TOE OF FILL
	POWER POLES TO BE REMOVED
	SLOPE

URS 7880 E UNION AVE, STE 100
 DENVER, CO 80237
 303-843-2888
 ENERGY & CONSTRUCTION, Inc.

1H NEWS DEVELOPMENT PROJECT
 SITE PLAN
 PERMITTING ONLY

CED-DS1HX-2002

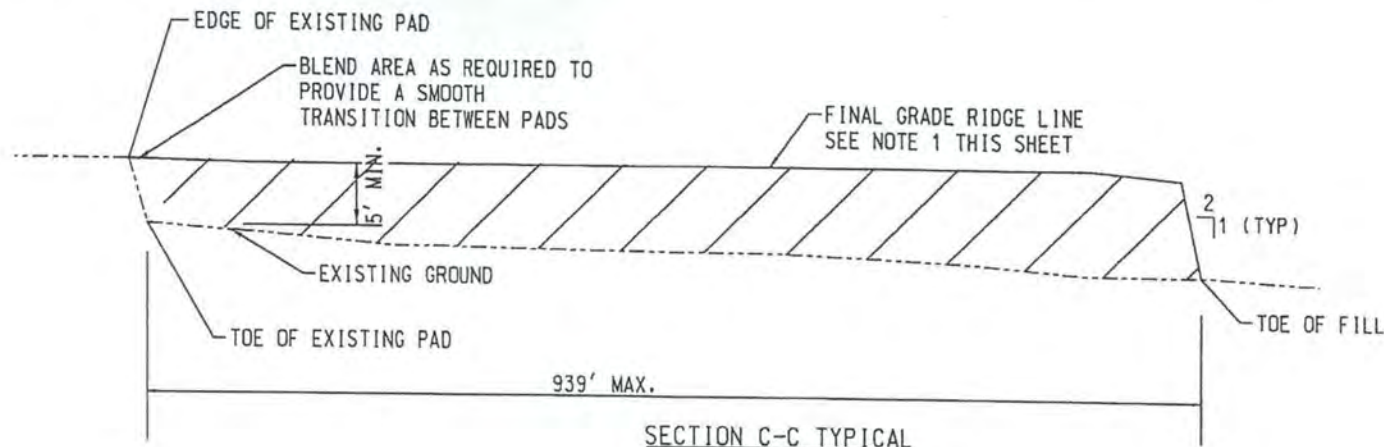


LEGEND:

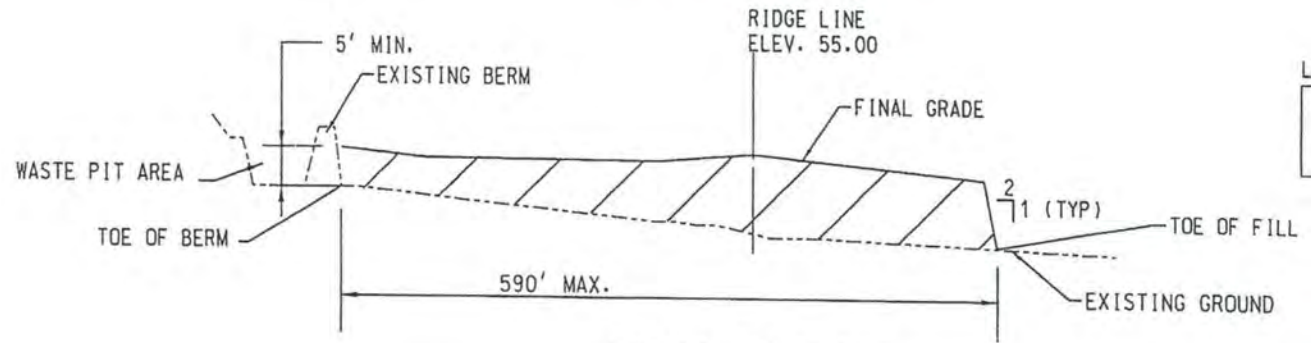
- EDGE OF PAD
- ⊗ TOE OF FILL
- ⊗ POWER POLES TO BE REMOVED

DRILL PAD TUNDRA FOOT PRINT
9.45 ACRES
FILL FOR GRAVEL PAD 100,200 CY

<h1>URS</h1>	7800 E UNION AVE, STE 100 DENVER, CO 80237 303-843-2800
	ENERGY & CONSTRUCTION, Inc.
1H NEWS DEVELOPMENT PROJECT PAD FOOT PRINT PERMITTING ONLY	
CED-DS1HX-2008	



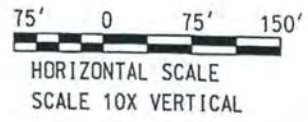
SECTION C-C TYPICAL
 LOOKING WEST
 SEE SHEET CED-DS1HX-2003



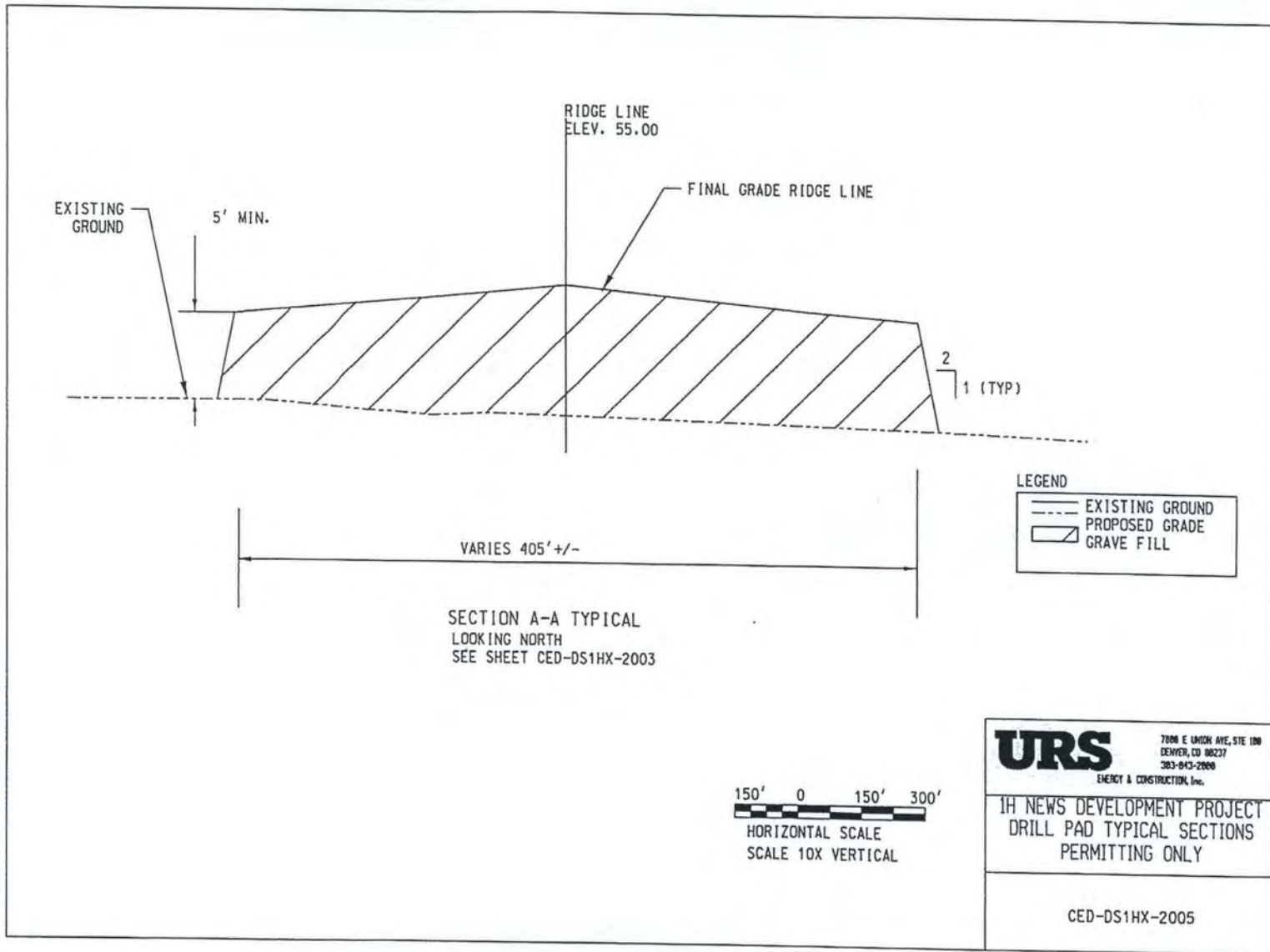
SECTION B-B TYPICAL
 LOOKING NORTH
 SEE SHEET CED-DS1HX-2003

LEGEND

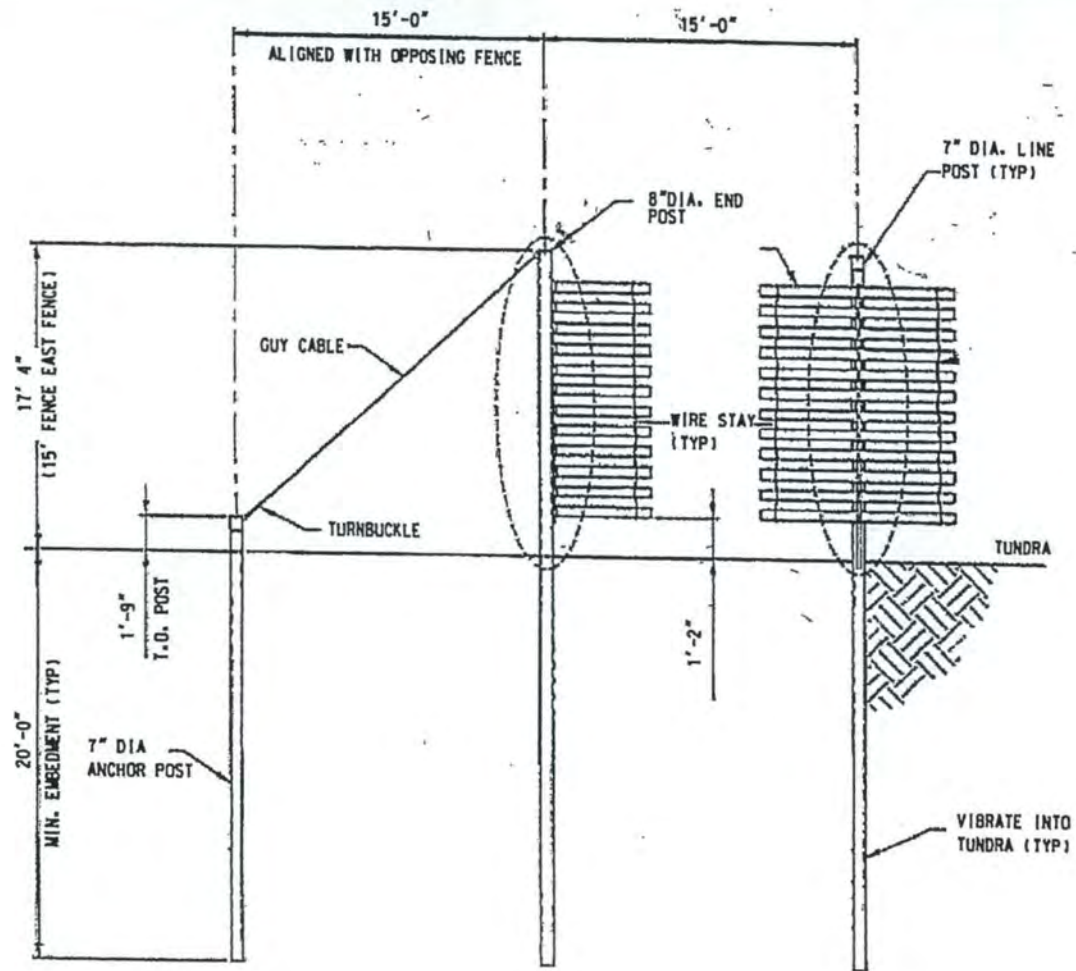
	EXISTING GROUND
	PROPOSED GRADE
	GRAVEL FILL



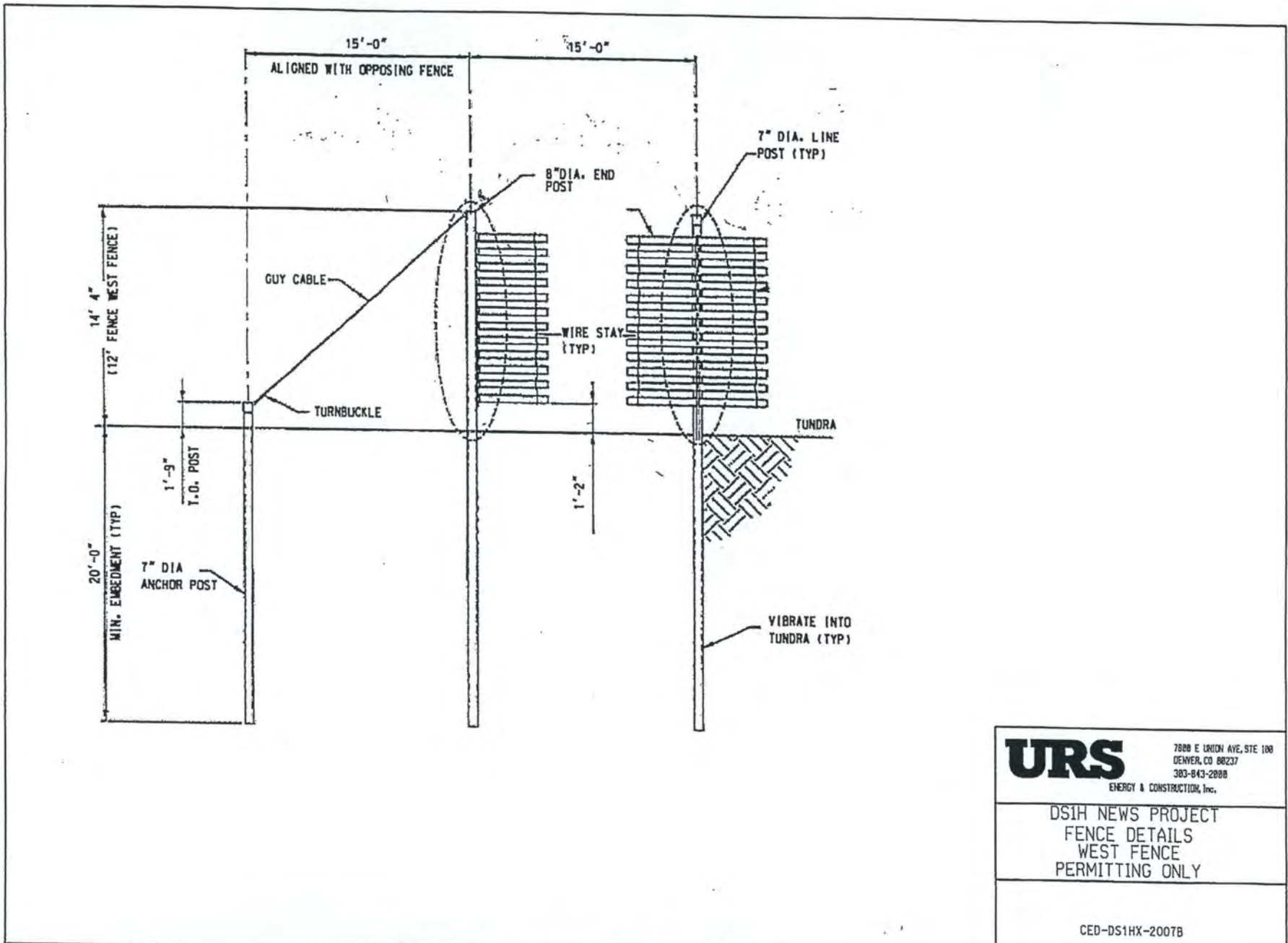
	7800 E UNION AVE, STE 100 DENVER, CO 80237 303-843-2000 ENERGY & CONSTRUCTION, Inc.
	KUPARAK BASE CAMP DS-1H DRILL PAD TYPICAL SECTIONS PERMITTING ONLY
CED-DS1HX-2004	



SHEET 7



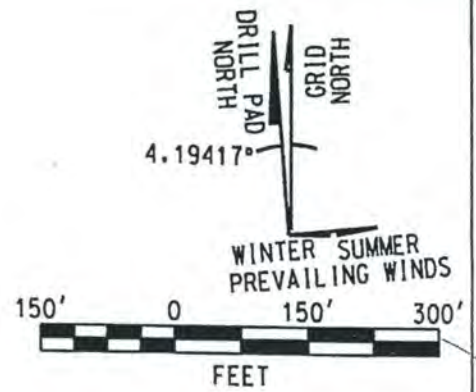
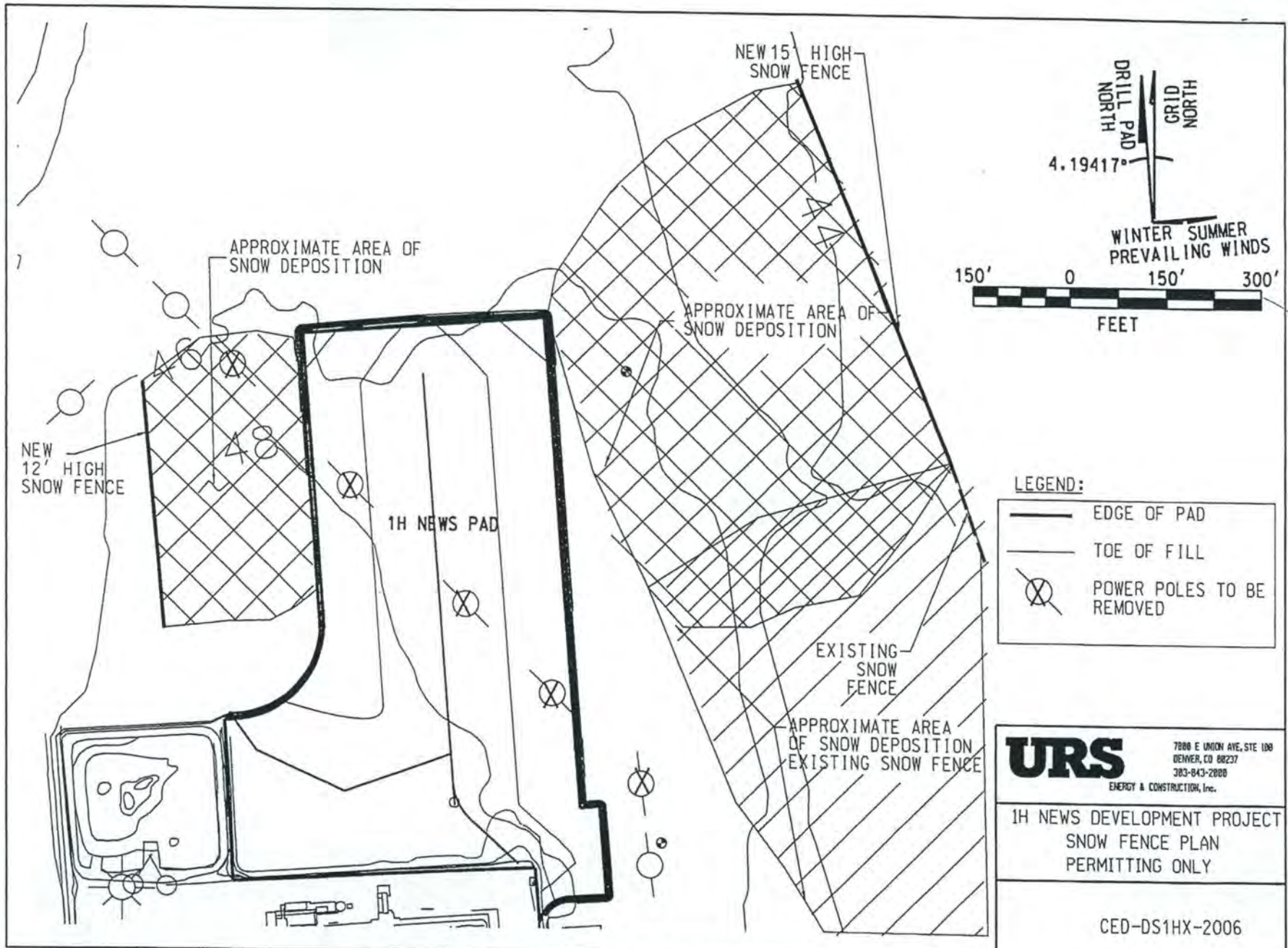
URS	7888 E UNION AVE, STE 100 DENVER, CO 80237 303-843-2000
	ENERGY & CONSTRUCTION, Inc.
DS1H NEWS PROJECT FENCE DETAILS EAST FENCE PERMITTING ONLY	
CED-DS1HX-2007A	



URS
 7800 E UNION AVE, STE 100
 DENVER, CO 80237
 303-843-2000
 ENERGY & CONSTRUCTION, Inc.

DS1H NEWS PROJECT
 FENCE DETAILS
 WEST FENCE
 PERMITTING ONLY

CED-DS1HX-2007B



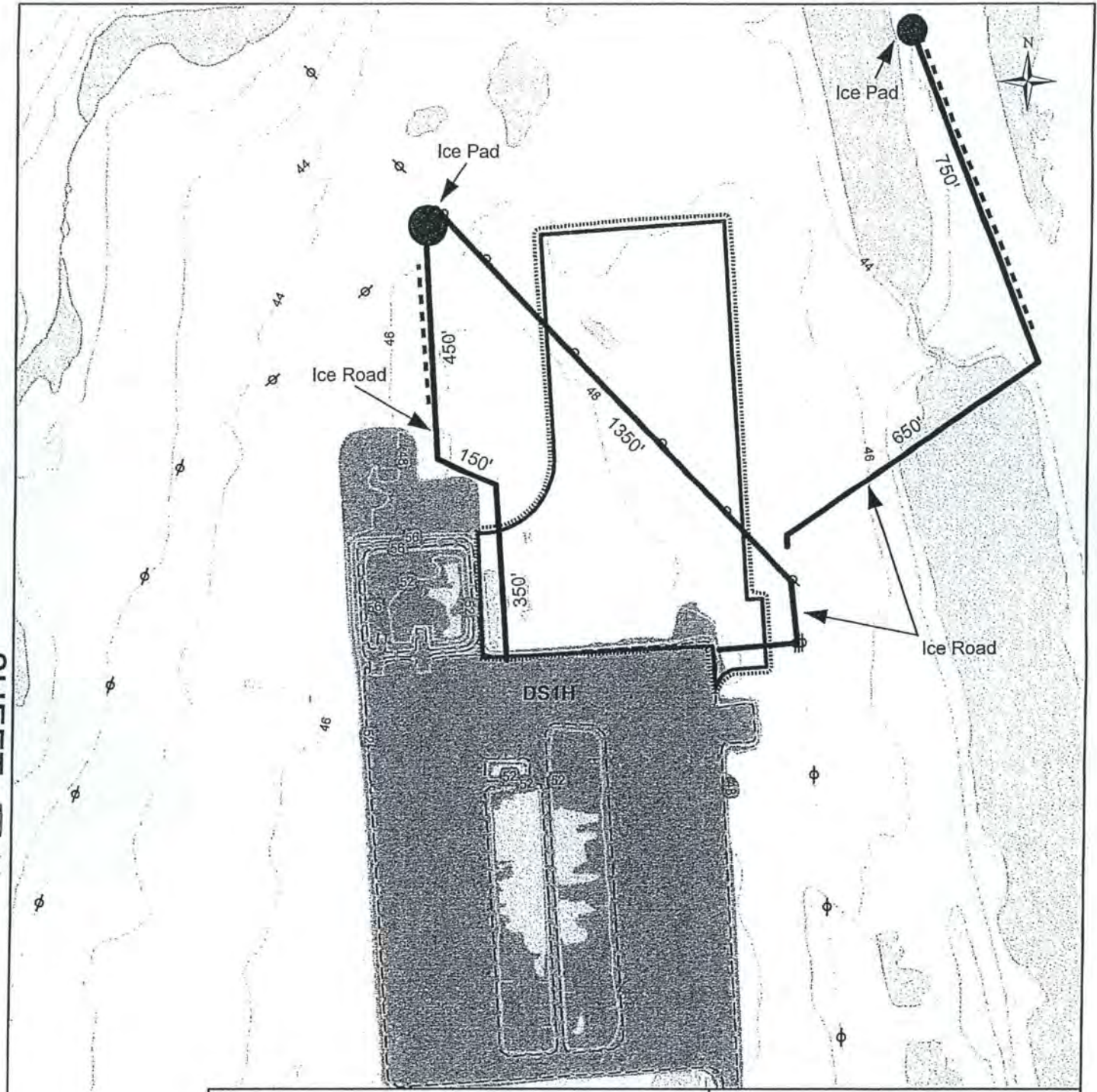
LEGEND:

	EDGE OF PAD
	TOE OF FILL
	POWER POLES TO BE REMOVED

URS
 7800 E UNION AVE, STE 100
 DENVER, CO 80237
 303-843-2000
 ENERGY & CONSTRUCTION, Inc.

1H NEWS DEVELOPMENT PROJECT
 SNOW FENCE PLAN
 PERMITTING ONLY

CE0-DS1HX-2006



Ice Roads
 Ice Road Ice Pad

1H NEWS Proposed Infrastructure
 1H News Pad Snow Fence
 1H News Pad Toe

Existing
 Pad Powerline Structure
 Gravel Shoulder Powerline
 Lakes

**1H NEWS
 Development Project
 Ice Roads**

